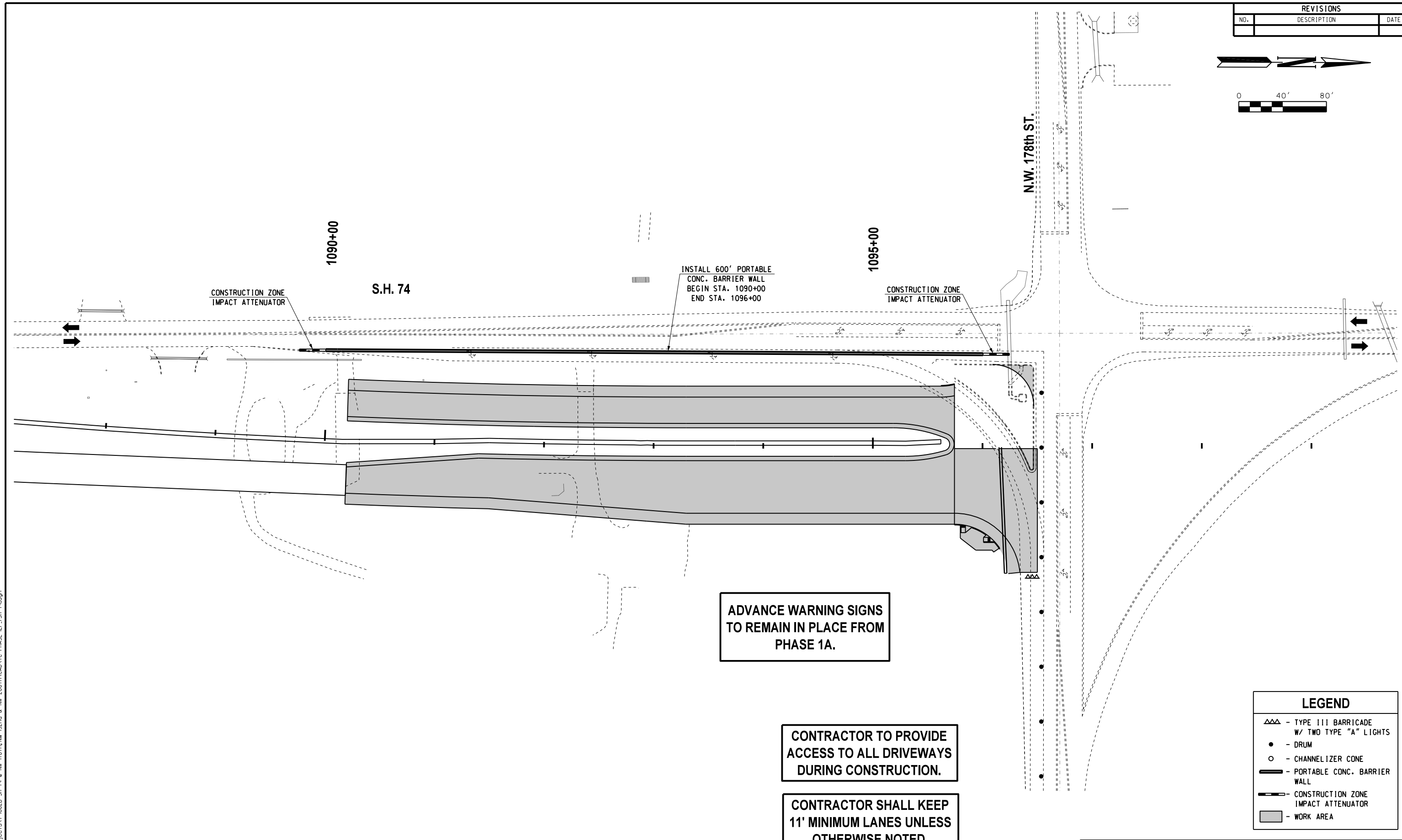
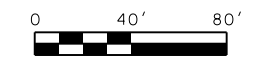


REVISIONS		
NO.	DESCRIPTION	DATE



INSTALL 600' PORTABLE  
CONC. BARRIER WALL  
BEGIN STA. 1090+00  
END STA. 1096+00

CONSTRUCTION ZONE  
IMPACT ATTENUATOR

S.H. 74

1090+00

1095+00

CONSTRUCTION ZONE  
IMPACT ATTENUATOR

N.W. 178th ST.

ADVANCE WARNING SIGNS  
TO REMAIN IN PLACE FROM  
PHASE 1A.

CONTRACTOR TO PROVIDE  
ACCESS TO ALL DRIVEWAYS  
DURING CONSTRUCTION.

CONTRACTOR SHALL KEEP  
11' MINIMUM LANES UNLESS  
OTHERWISE NOTED.

LEGEND	
	- TYPE III BARRICADE W/ TWO TYPE "A" LIGHTS
	- DRUM
	- CHANNELIZER CONE
	- PORTABLE CONC. BARRIER WALL
	- CONSTRUCTION ZONE IMPACT ATTENUATOR
	- WORK AREA

Design	GDB	08/10/17
Drawn	RWR	08/10/17



**TRAFFIC CONTROL  
PHASES 1E & F  
S.H. 74**

State Job No. 14964(08) Sheet No. T38

08/10/17 G:\Projects\T-1662B SH 74 @ NW 178th, NW 192nd & NW 206th\CAD\TC PHASE 1E\JSH 74.dgn